



iQ Will Wyatt Residence

Description of Accommodation

iQ Will Wyatt Court is ideally situated in Zone 1, near the lively Hoxton and Shoreditch areas known for their pop-up events, restaurants, markets, and nightlife. You'll have easy access to entertainment options such as Boxpark and Brick Lane, as well as the scenic Shoreditch Park nearby.

The property has undergone a comprehensive refurbishment, offering modern amenities including game and cinema rooms, study spaces, and newly renovated rooms. Each room features a small double bed with underbed storage, a study area with USB charging points, and shared kitchen and living areas equipped with sofas and a TV.

Additional Information

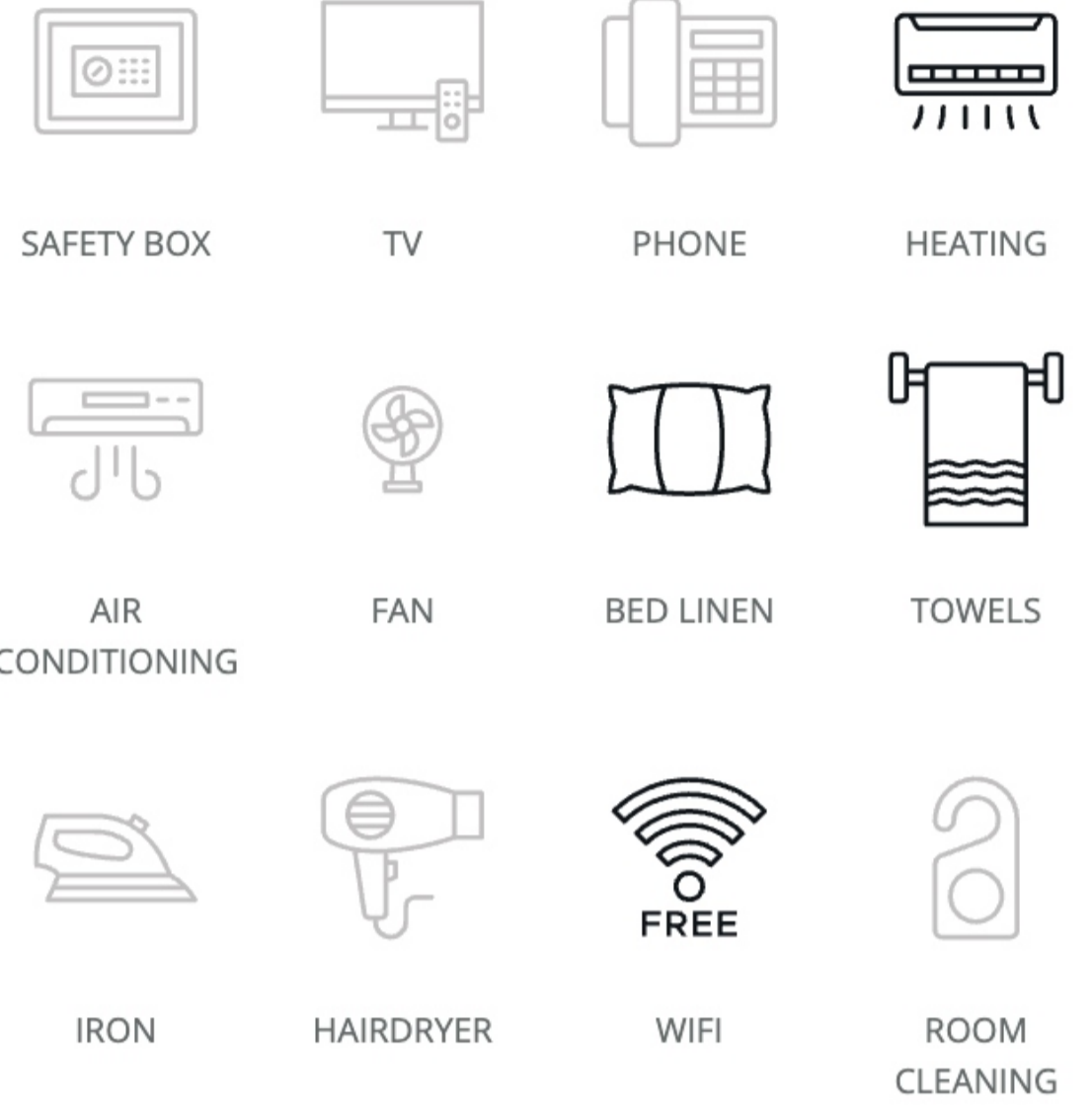
- On-Demand Cleaning available: Room cleaning for **£12.90**, linen changing for **£10.92** and towel changing for **£1.44** organized and paid to EC and organized with the residence.
- There are 7 washing machines and 9 dryers. The cost – **£3.30** per wash and **£1.90** per drying cycle.
- Luggage drop off is allowed only on arrival
- Utility bills are included
- 24-hour on-site security and CCTV on site
- Concierge on site from Monday to Friday
- Kitchen utensils are provided.

House Rules

- Students need to be 18 + to choose this accommodation
- Mixed Gender: Male and female students share common areas and facilities, but bedrooms are single gender.
- Students are not required to pay a damage deposit
- Each student is allowed to have 3 visitors at a time. Visitors can stay until any time, but they must respect our quiet hours policy (Weekdays are 10pm to 7am and weekends are 11pm to 6am). Students must sign their visitor(s) in at reception. Residents can also have 1 visitor stay overnight for a maximum of 3 days.
- Smoking is not permitted in the accommodation
- Students arriving in EC accommodation between 22.00 – 08.00 may be asked to book alternative accommodation for their first night. This is to ensure student's safety on arrival.
- While we promote and support diversity, we cannot guarantee language mix. However, we always encourage students to use English to communicate, be respectful and inclusive of others
- RESIDENT BELONGINGS: Once your tenancy has ended iQ does not hold any obligation for items left behind by residents. It is very important you take all your belongings with you when you move out. We are unable to forward on any left items
- EC provides a clean living space for all students and expects a basic level of respect from all students. For example, if something is dropped, pick it up; do not leave clothes and belongings on the floor; place rubbish and leftovers in a garbage bag
- Students are required to follow **EC Student Code of Conduct**, failure to do so can result in termination of the accommodation.

Accommodation Features

Room facilities



Building facilities

- Free WiFi
- Lift
- Bicycle storage
- 24/7 staff presence
- 24/7 security
- Courtyard
- Social spaces
- Study area
- Cinema room (must be booked at reception)
- CCTV
- Games room
- Private dining space (must be booked at reception)

Room furniture

- Wardrobe
- Bookshelf
- Study desk and chair
- Set of drawers
- Mirror
- USB charging points
- Double bed with underbed storage

Kitchen furniture

- Microwave, oven, induction hob
- Small fridge/freezer
- Kettle, pans, frying pan, plates, bowls, cutlery, bottle/tin opener, oven glove, scissors, mugs, glasses, wine glasses, chopping board, baking tray.
- Breakfast bar and sofas.
- Bath and hand towel supplied, and toilet roll.

Room Type Single. Room size: 11 msq

Bathroom Type En-suite (Shower)

Board Status Self-catering

Address

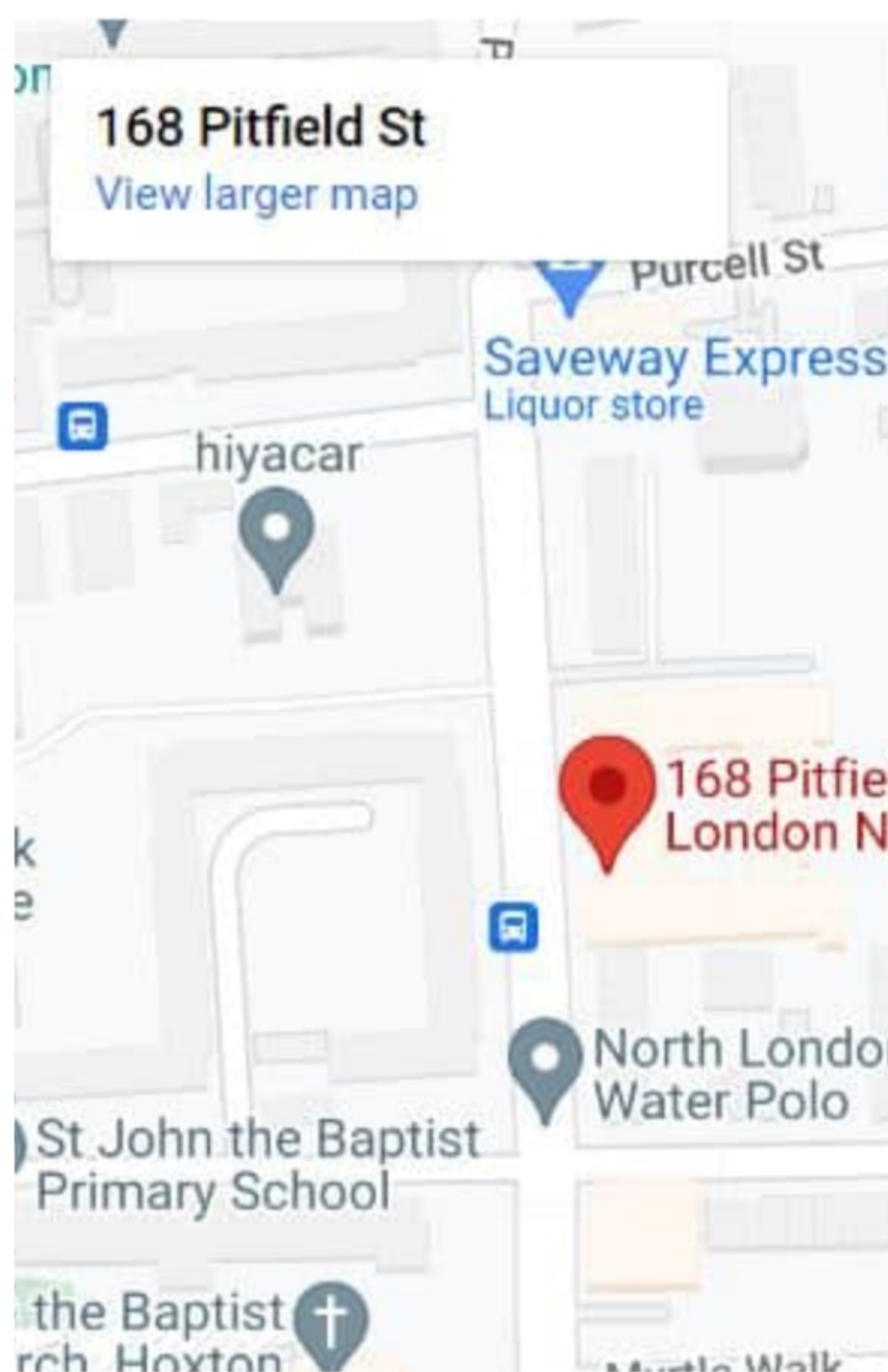
iQ Will Wyatt Court
168 Pitfield Street
London N1 6JP
United Kingdom

Phone Number

44 (0) 20 7739 5103

Journey to school

30-minute by walk or 17-minute by public transport.



Arrival and Departure

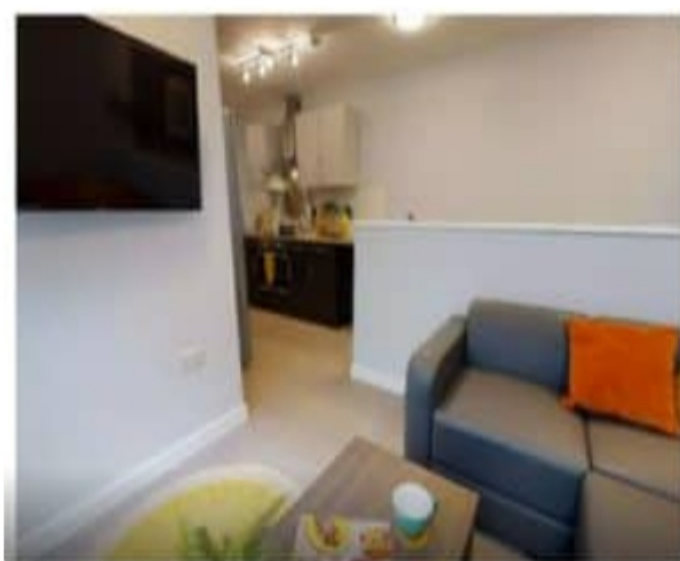
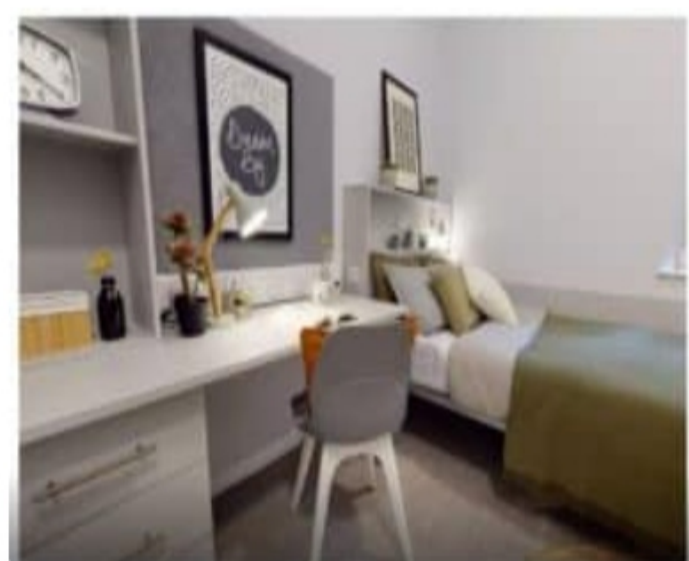
- **Arrival day:** Saturday (Sunday arrival is possible on request)
Check-in: 3pm
Early check-in is not allowed but can store luggage if they arrive early until check in time.
Late check-in is allowed.
- **Departure day:** Saturday
Check-out: 10:00 a.m.
Late check-out is not possible.

Arrival Procedures

Please send flight details or an estimated arrival time at the time of booking accommodation or as soon as possible once known. On arrival, come to the main reception and the residence staff will give you your card and show you to your room. On departure, please leave your room tidy and return your keys at reception in the lobby.

Gallery

Images are for representation purpose only. Actual furnishings may differ from those shown. Amenities and services are subject to change. Please refer to partners.ecenglish.com for the most up to date factsheet. Information live on this site will supersede any information provided earlier.



Cancellations

Cancellation prior to arrival

Students cancelling or postponing 14 days or less prior to their accommodation dates will be charged a two-week accommodation fee at the rate quoted in the price list for the accommodation booked and the accommodation placement fee.

Cancellation after arrival

Students leaving their accommodation must give notice in writing 4 weeks prior to termination. If the 4-week notice period is not provided a cancellation fee equal to 4 weeks of the accommodation cost will apply. After deducting the price of accommodation used at the rate quoted in the price list, including the required notice period charged at the same rate, students will be refunded the remaining accommodation costs.

Other ways to get to the accommodation

From London Heathrow (1 hour 15 minutes)

From London Heathrow take the Piccadilly Line to Kings Cross and change to the Northern Line to Old Street.

From London Gatwick (50 minutes)

Take the London Thameslink trainline to London Bridge. At London Bridge change for the northern line to Old Street.

From London Stanstead (1 hour 10 minutes)

From Stanstead, take the Stanstead Express to Tottenham Hale, where you will change to the Victoria Line to Kings Cross. At Kings Cross you will change to the Northern Line to Old Street.

