

IQ Shoreditch Residence

Description of Local Area

The iQ Shoreditch building is located just a couple of minutes from the Tube at Old Street in Shoreditch. The area is famous for its pop-up events, restaurants, markets and nightlife and its mix of pop up bars in vacant petrol stations, blues bars, rooftop bars, late-night clubs and speakeasy bars.

You are only a short walk away from the action, including the world-famous Brick Lane, with London's biggest selection of curry and pop up restaurants.

Description of Accommodation

These refurbished self-contained rooms give you everything you need, with a small double bed, lots of storage, coffee table and comfy seating, wooden floors and a half-width floor-to-ceiling window for lots of natural light. They also include the use of the building's onsite gym, laundry and social spaces.

Each studio consists of a small double bed, a fully equipped kitchenette, and a desk and light. There is free Wi-Fi in every room. There is a private bathroom. In the bedroom there is:

- Wardrobe
- Study desk & Chair
- Chest of drawers
- Bookshelf
- Small double bed
- Kitchenette
- Mirror
- Seating area (coffee table and chair)

Miscellaneous

- On-Demand Cleaning available: Room cleaning for **£12.90**, linen changing for **£10.92 and towel changing for £1.44 organized and paid** to EC.
- There is a laundry room with 10 app-operated washing machines. The cost – £3.40 per wash and £1.90 per dry. The washing machines can hold up to 10kg.
- Utility bills are included.
- 24-hour on-site security and CCTV on site.
- Kitchen includes:
Microwave, hob and small fridge/freezer, kettle as well as 2 pans, frying pan, 2 plates, 2 small plates, 2 bowls, 2 forks, 2 spoons, 2 knives, 1 cutting knife, bottle opener, tin opener, stirring spoon, oven glove, scissors, 1 mug, 2 glasses, 2 wine glasses, chopping board, baking tray. Students who book studio can have also access to the communal kitchen. Bath and hand towel supplied, and toilet roll.

Accommodation Features

Room facilities



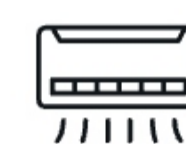
SAFETY BOX



TV



PHONE



HEATING



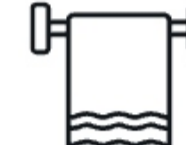
AIR
CONDITIONING



FAN



BED LINEN



TOWELS



IRON



HAIRDRYER



FREE

WIFI



ROOM
CLEANING

Building facilities

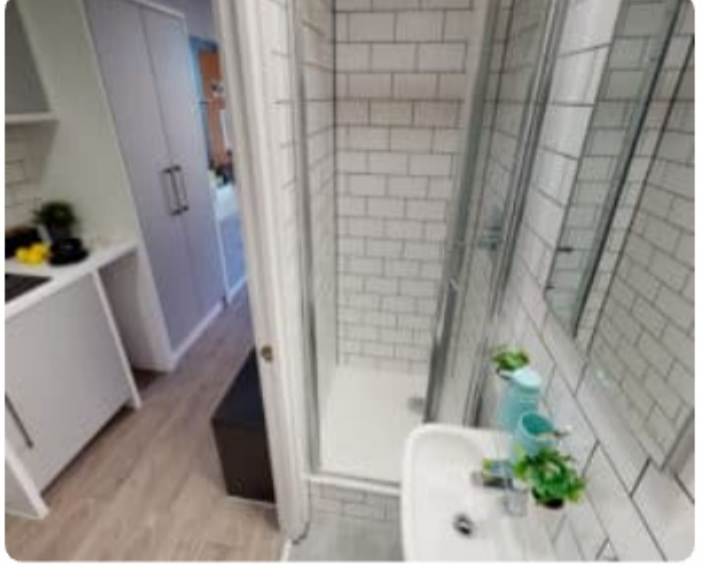
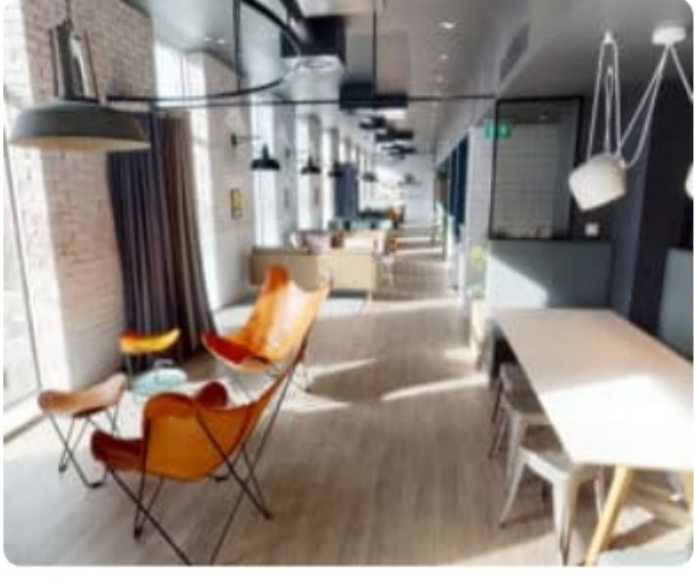
- Free WiFi
- Free gym
- Sky Lounge
- Dance studio (must be booked at reception)
- Lift
- Bicycle storage
- 24/7 staff presence
- 24/7 security
- Social spaces
- Cinema room must be booked at reception)
- CCTV
- Games room
- Study area
- Private dining space (must be booked at reception)

Room Type Studio – Single.
Room size: 17 -19 msq

Bathroom Type En-suite (Shower)

Board Status Self-catering

Gallery



Address

IQ Shoreditch,
2 Silicon Way,
East Road, London
N1 6AT

Phone Number

+44 (0) 20 7952 2180

Emergency Number

+44 (0) 798 377 3121



Arrival and departure

- **Arrival day:** Saturday (Sunday arrival is possible on request)
Check-in: Guests can check in at 3pm, Early check – in is not allowed but can store luggage if they arrive early until check in time. Late check in is allowed.
- **Departure day:** Saturday
Check-out: 10:00 a.m. Late check out is not possible.

Journey to school

Approx. 10-15 minutes via the tube.

Walk 3 minutes to Old Street tube station and take the northern line 1 stop to Angel.

Exit Angel, the school will be on the left across the road.

For information on prices, please refer [here](#)

Cancellations

Cancellation prior to arrival

House Rules

- Students must be 18 + to choose this residence
- Mixed Gender: Male and female students share common

Students cancelling or postponing 14 days or less prior to their accommodation dates will be charged a two-week accommodation fee at the rate quoted in the price list for the accommodation booked and the accommodation placement fee.

Cancellation after arrival

Students leaving their accommodation must give notice in writing 4 weeks prior to termination. If the 4-week notice period is not provided a cancellation fee equal to 4 weeks of the accommodation cost will apply. After deducting the price of accommodation used at the rate quoted in the price list, including the required notice period charged at the same rate, students will be refunded the remaining accommodation costs.

Airport Pickup

If you have booked accommodation with EC you must arrive at the airport between 08:00 and 20:00.

Late/early arrivals may be asked to book alternative accommodation. Your driver will be waiting for you at Arrivals holding a sign with your name.

If after 10 minutes you cannot see your driver, please contact our emergency number +44 (0) 7983 773 121.

If your flight is missed, delayed, or cancelled, or if there is any other problem, you should notify EC by calling +44 (0) 7983 773 121 to rearrange your transfer time and avoid additional cost.

Other ways to get to your residence

From London Heathrow (1 hour 15 minutes)

From London Heathrow take the Piccadilly Line to Kings Cross and change to the Northern Line to Old Street.

From London Gatwick (50 minutes)

Take the London Thameslink trainline to London Bridge. At London Bridge change for the northern line to Old Street.

From London Stansted (1 hour 10 minutes)

From Stansted, take the Stansted Express to Tottenham Hale, where you will change to the Victoria Line to Kings Cross. At Kings Cross you will change to the Northern Line to Old Street.

Arrival Procedures

Please send flight details or an estimated arrival time at the time of booking accommodation or as soon as possible once known. On arrival, come to the main reception and the residence staff will give you your card and show you to your room. On departure, please leave your room tidy and return your keys at reception in the lobby.

Mixed Gender. Male and female students share common areas and facilities, but bedrooms are single gender.

- Students are not required to pay a damage deposit.
- Guest are allowed.
- Smoking is not permitted anywhere in the accommodation.
- While we promote and support diversity, we cannot guarantee language mix. However, we always encourage students to use English to communicate, be respectful and inclusive of others
- RESIDENT BELONGINGS: Once your tenancy has ended iQ does not hold any obligation for items left behind by residents. It is very important you take all your belongings with you when you move out. We are unable to forward on any left items
- Students arriving in EC accommodation between 22.00 – 08.00 may be asked to book alternative accommodation for their first night. This is to ensure student's safety on arrival.
- EC provides a clean living space for all students and expects a basic level of respect from all students. For example, if something is dropped, pick it up; do not leave clothes and belongings on the floor; place rubbish and leftovers in a garbage bag
- Students are required to follow **EC Student Code of Conduct**, failure to do so can result in termination of the accommodation.

For more accommodation terms and conditions please refer to **EC accommodation policy**.